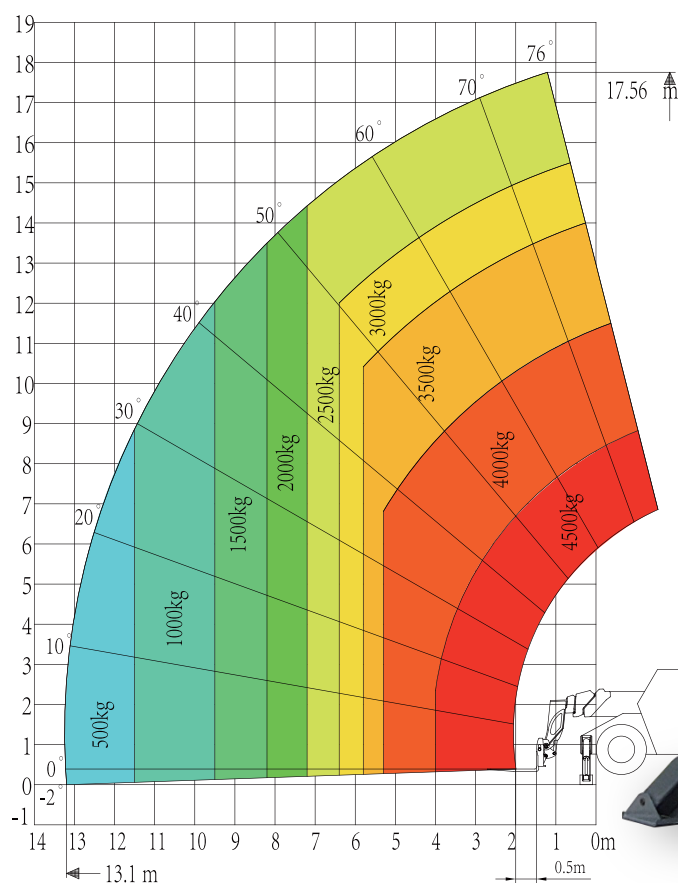


TH45-18 Stationary Multi-functional Telescopic Handler

Multi-functional

High rate of return



PARTNERS IN ACCESS

SINOBOOM

DIMENTIONS			
Overall length	7.62m	Overall height	2.6m
Overall length(to face of fork)	6.34m	Cab width	0.95m
Overall width-Stabilisers fully retracted	2.3m	Ground clearance	0.35m
Overall width-Stabilisers extended	4.10m	Wheel base	3.1m
Overall width-Stabilisers fully extended	3.73m	Length/Width/height of fork	1.55m×1.08m×0.83m

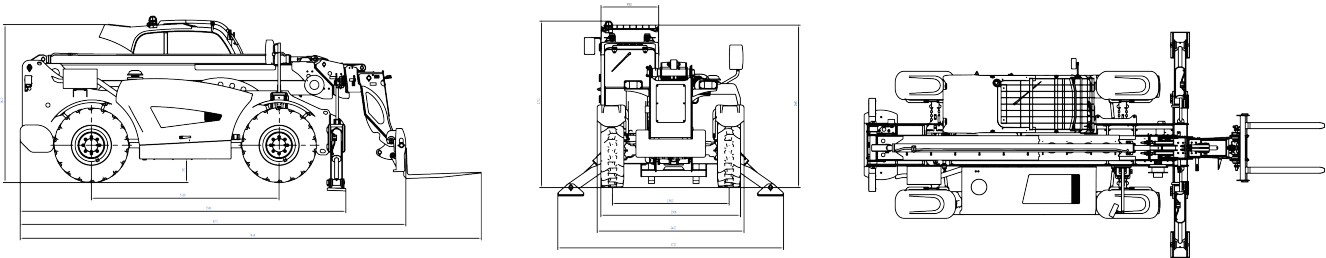
PERFORMANCE			
Rated load	4500kg	Turning radius	4.3m
Max.lifting height	17.6m	Approach/departure angle	30°/30°
Max.forward reach	13.1m	Max.allowable tilt angle	3°
Tilt-up angle of fork	14°	Max.allowable wind speed	12.5 m/s
Tilt-down angle of fork	-112°	Tire specification/type	400/80-24 (hollow tire)
Max.driving speed(boom retracted)	35 km/h	Attachment recognition system	yes
Gradeability	50 %		

POWER			
Transmission type	Hydrostatic	Number of cylinder-displacement	4-3.621L
Number of gears(forward/reverse)	2/2	Engine injection mode	EFI
Drive mode	4WD	Engine cooling mode	water- cooling
Steering mode	2 wheel steer,4 wheel steer,crab mode	Capacity-hydraulic oil	222L
Engine(type/brand/emission)	YCF36100-T480/Yuchai/China IV	Capacity-fuel tank	142L
Rated power/rotating speed	74 kw/2200 rpm	Control voltage	12 VDC
Max.torque/rotating speed	420N·m/1300-1600 rpm		

WEIGHT	
Weight	12550kg
STANDARD	
GB,CE	

STANDARD CONFIGURATION			
Wet braking bridge	Engine automatic speed-up function	7 inch intelligent screen	Frame leveling
3 steering modes	2-speed transmission	Electro-proportional joystick	Tip over protection
Attachment 134° rotating and leveling	Braking on 4 wheels	4WD	BUS control valve
Fault diagnosis system	Weighting system		

OPTIONS			
RFID attachment recognition system	Reversing camera	360° panoramic camera	Optional attachments: fork-type manned platform,bucket,clamp, vacuum suction device,gripper.
Attachment work light	Anti-collision device	Document box	
AC power to platform	Secondary guarding	Automatic parking	



SINOBOOM INTELLIGENT EQUIPMENT CO.,LTD.

Add:No.128, East Jinzhou Avenue,Ningxiang High-tech industrial park,
 Changsha,Hunan,China.
 Web:www.sinoboom.com.cn

We reserve the right to make specification.
 The above represents the current specifications
 at time of publications. 2023